

\$575,000 - 1740 13th Avenue, Invermere

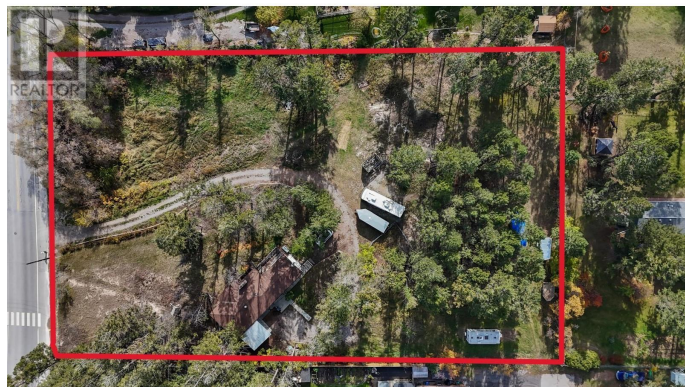
MLS® #2480058

\$575,000

0 Bedroom, 0.00 Bathroom,
Vacant Land on 1.92 Acres

Invermere, Invermere, British Columbia

Welcome to this RARE opportunity! Almost 2 ac in the heart of Invermere with an unbeatable location surrounded by schools. Perhaps you want to build your dream home with lake and mountain views or you may choose to repurpose the land for a new development offering a sought after location. Don't sleep on this one as opportunities like this are far and few between! The home is uninhabitable and will need to be removed. (id:36535)



Essential Information

Listing #	2480058
Price	\$575,000
Bathrooms	0.00
Acres	1.92
Type	Vacant Land
Sub-Type	Freehold

Community Information

Address	1740 13th Avenue
Subdivision	Invermere
City	Invermere
State	British Columbia
Zip Code	V0A1K4

Amenities

Amenities	Schools, Shopping, Ski area
Features	Level lot, Private setting, Treed

View Lake view, Mountain view, Valley view

Interior

Heating No heat

Exterior

Exterior Features Level, Wooded area

Additional Information

Zoning Unknown

Listing Details

Listing Office Courtesy Of Shane Fuller Of Greater Property Group

MLS®, REALTOR®, and the associated logos are trademarks of The Canadian Real Estate Association.