

\$225,000 - 2030 Panorama Drive Unit# 530, Panorama

MLS® #2479711

\$225,000

0 Bedroom, 1.00 Bathroom, 531 sqft
Single Family on 0.00 Acres

Horsethief, Panorama, British Columbia

Welcome to 530 Horsethief! This is a fully furnished Horsethief Studio converted to a one bedroom with tasteful upgrades. Conveniently located in the lower village and just steps from the Village Gondola, the General Store, the Toby Chairlift and the Toby Pool and Horsethief hot tubs. The outdoor corner patio is in a great spot to watch the sun set behind the beautiful mountain views. You wont want to miss this one! Get in touch today for more information or to schedule a viewing.
(id:36535)

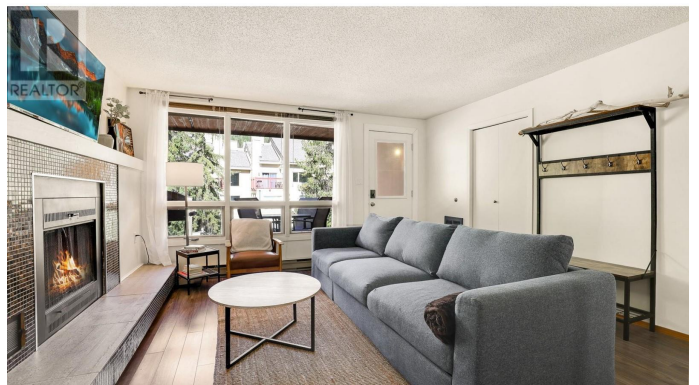
Built in 1980

Essential Information

Listing #	2479711
Price	\$225,000
Bathrooms	1.00
Square Footage	531
Acres	0.00
Year Built	1980
Type	Single Family
Sub-Type	Strata

Community Information

Address	2030 Panorama Drive Unit# 530
Subdivision	Horsethief
City	Panorama
State	British Columbia
Zip Code	V0A1T0



Amenities

Amenities	Golf Nearby, Park, Recreation, Shopping, Ski area, Clubhouse, Racquet Courts
Features	Treed, Corner Site, Sloping, Wheelchair access, One Balcony
Parking	Parkade, Street
View	Mountain view, View (panoramic)
Has Pool	Yes
Pool	Inground pool, Outdoor pool, Pool

Interior

Appliances	Range, Refrigerator, Dishwasher
Heating	Baseboard heaters
Fireplace	Yes
Fireplace Fuel	Wood
Fireplace Type	Conventional

Exterior

Exterior	Stucco, Wood, Wood siding, Composite Siding
Exterior Features	Landscaped, Rolling, Sloping
Roof Material	Asphalt shingle
Roof Style	Unknown

Additional Information

Zoning	Unknown
--------	---------

Listing Details

Listing Office	Courtesy Of Alicia Balawyder Of RE/MAX Invermere
----------------	--

MLS®, REALTOR®, and the associated logos are trademarks of The Canadian Real Estate Association.