

\$774,900 - 1509 10th Avenue, Invermere

MLS® #10343461

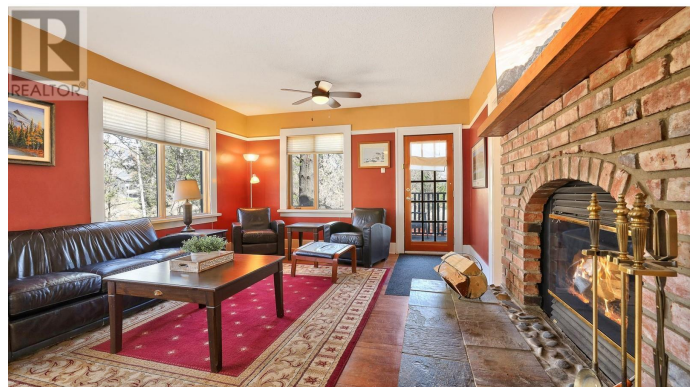
\$774,900

5 Bedroom, 3.00 Bathroom, 2,884 sqft

Single Family on 0.21 Acres

Invermere, Invermere, British Columbia

Welcome to 1509 10th Avenue, a charming and versatile home nestled in the desirable Wilder neighborhood—right in the heart of Invermere, BC. Just a short stroll to downtown shops, cafes, and beautiful Kinsmen Beach, this property offers the perfect blend of mountain town convenience and everyday comfort. This character-filled home features 4 bedrooms across a unique and welcoming floor plan, including 2 bedrooms on the main level and 2 more upstairs. The main floor is anchored by a stunning wood-burning fireplace with a brick mantle, that opens to both the kitchen and living room adding warmth and timeless style to the spacious living area. The open-concept kitchen and dining space flow seamlessly, making it ideal for hosting family and friends. Upstairs, a bright and cozy family room offers additional space to relax, work, or play. Downstairs, a separate, legal 1-bedroom suite provides fantastic income potential or space for extended family. Outside, enjoy the generous yard complete with multiple patio spaces designed for outdoor enjoyment. A large parking pad adds practicality and ease for your vehicles, toys, or guests. Whether you're looking for a full-time residence, vacation home, or investment property, this Wilder gem puts you steps from Invermere's best amenities, lakeside fun, and endless outdoor recreation—from hiking and biking to skiing and golfing. Don't miss this rare opportunity to own in one of Invermere's most walkable and



sought-after locations! (id:36535)

Built in 1965

Essential Information

Listing #	10343461
Price	\$774,900
Bedrooms	5
Bathrooms	3.00
Half Baths	1
Square Footage	2,884
Acres	0.21
Year Built	1965
Type	Single Family
Sub-Type	Freehold

Community Information

Address	1509 10th Avenue
Subdivision	Invermere
City	Invermere
State	British Columbia
Zip Code	V0A1K0

Amenities

Amenities	Golf Nearby, Park, Recreation, Schools, Ski area
Features	Balcony
Parking Spaces	4

Interior

Appliances	Refrigerator, Dishwasher, Microwave, Oven, Washer & Dryer
Heating	Baseboard heaters
Has Basement	Yes
Basement Type	Full
Fireplace	Yes
Fireplace Fuel	Wood
Fireplace Type	Conventional
# of Stories	3

Exterior

Exterior	Wood
Roof Material	Asphalt shingle
Roof Style	Unknown

Additional Information

Zoning	Unknown
--------	---------

Listing Details

Listing Office	Courtesy Of Lindsey Sherlock and Geoff Sherlock Of RE/MAX Invermere
----------------	---

MLS®, REALTOR®, and the associated logos are trademarks of The Canadian Real Estate Association.