

# \$449,000 - 2050 Summit Drive Unit# 409, Panorama

MLS® #10332459

**\$449,000**

1 Bedroom, 2.00 Bathroom, 915 sqft  
Single Family on 1.00 Acres

Ski Tip, Panorama, British Columbia

Truly one of a kind unit. Step out your front door and you are ready to ski. This centrally located, fully renovated unit is a combination of a studio and one bedroom on the top floor of Ski Tip Lodge. You can enjoy your morning coffee or apres' drinks on one of your private decks looking up the mountain watching the skiers, bikers, and hikers. The unit has been developed with entertaining in mind with a full gourmet kitchen, large dining and living area. The master suite has an ensuite, walk in closet, fireplace, and ample room for any other additions you wish. GST has been paid (id:36535)

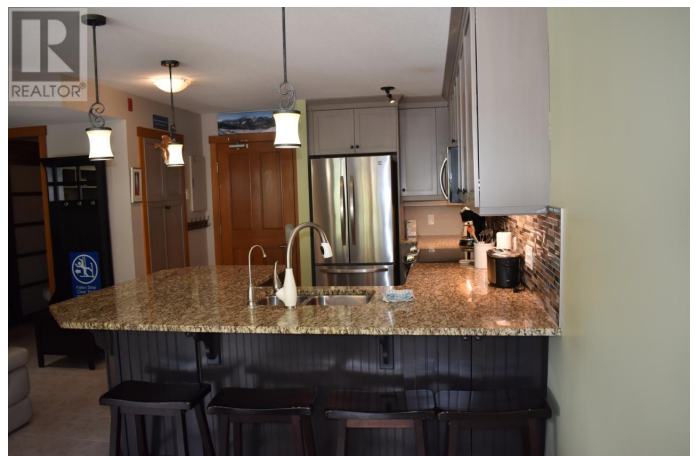
Built in 1998

## Essential Information

Listing #	10332459
Price	\$449,000
Bedrooms	1
Bathrooms	2.00
Half Baths	1
Square Footage	915
Acres	1.00
Year Built	1998
Type	Single Family
Sub-Type	Strata

## Community Information

Address 2050 Summit Drive Unit# 409



Subdivision	Ski Tip
City	Panorama
State	British Columbia
Zip Code	V0A1T0

### **Amenities**

Amenities	Golf Nearby, Shopping, Ski area
Features	Central island, Two Balconies
Parking Spaces	1
Parking	Parkade

### **Interior**

Appliances	Refrigerator, Dishwasher, Dryer, Range - Electric, Microwave, Washer
Heating	In Floor Heating
Fireplace	Yes
Fireplace Fuel	Gas
Fireplace Type	Unknown
# of Stories	1

### **Exterior**

Exterior	Other
Exterior Features	Landscaped
Roof Material	Asphalt shingle
Roof Style	Unknown

### **Additional Information**

Zoning	Unknown
--------	---------

### **Listing Details**

Listing Office	Courtesy Of David Jenkins Of MaxWell Rockies Realty
----------------	---

MLS®, REALTOR®, and the associated logos are trademarks of The Canadian Real Estate Association.