

\$135,000 - 2049 Summit Drive Unit# 314d, Panorama

MLS® #10329204

\$135,000

3 Bedroom, 3.00 Bathroom, 1,212 sqft
Single Family on 1.00 Acres

The Lookout, Panorama, British Columbia

Start planning your vacations here at Panorama Mountain. This 1/4 share, 3 Bedroom corner unit is your perfect choice to escape the hustle and the bustle of the city, bring your skis, golf clubs, bikes or what ever you wish to use here in the mountains. Your monthly fee covers everything other than the cleaning costs. If you do not wish to use all of your weeks there is an opportunity to rent out some of your weeks to help offset the operating costs. (id:36535)

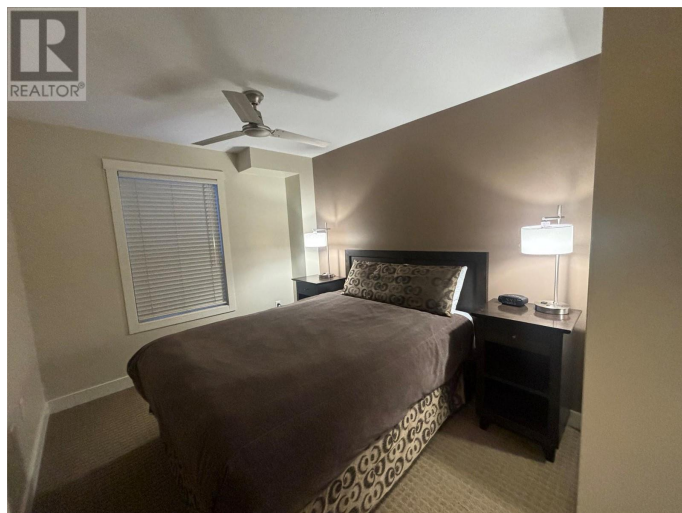
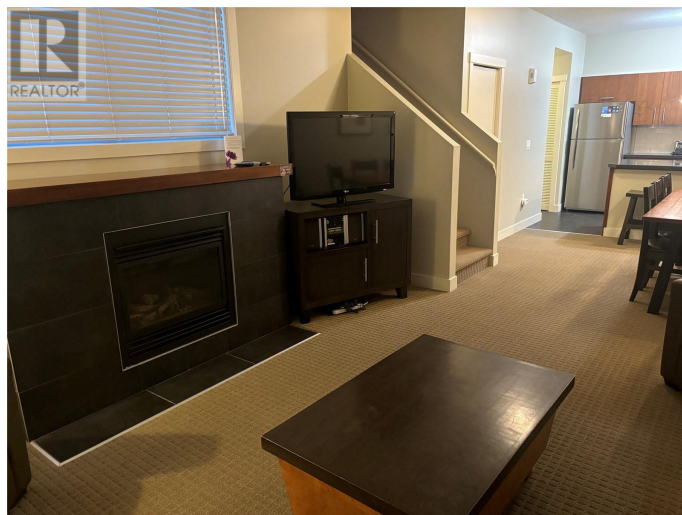
Built in 2006

Essential Information

Listing #	10329204
Price	\$135,000
Bedrooms	3
Bathrooms	3.00
Half Baths	1
Square Footage	1,212
Acres	1.00
Year Built	2006
Type	Single Family
Sub-Type	Strata

Community Information

Address	2049 Summit Drive Unit# 314d
Subdivision	The Lookout
City	Panorama
State	British Columbia



Zip Code V0A1T0

Amenities

Parking Parkade

Interior

Heating Baseboard heaters

Fireplace Yes

Fireplace Fuel Propane

Fireplace Type Unknown

of Stories 2

Additional Information

Zoning Unknown

Listing Details

Listing Office Courtesy Of David Jenkins Of MaxWell Rockies Realty

MLS®, REALTOR®, and the associated logos are trademarks of The Canadian Real Estate Association.